



Assembly Aging and Long-Term Care Committee

Informational Hearing on Services for Seniors to Age at Home

October 25, 2017

CURRENT AND INNOVATIVE MODELS OF SERVICE

**Presented by Cheryl Wilson, RN, MA, LNHA
Chief Executive Officer**

1962 - 2017



As community needs changed,
St. Paul's Senior Services
met the challenge.

1963

Residents
move into
Manor.
**First HUD
building in
California**

1967

Manor
Tower
opened

1982

Health
Center
completed

Tower

Manor





1992

St. Paul's **Villa**
Assisted Living.

2010

St. Paul's **Villa**
Opens
Memory Care
program.

1997

St. Paul's
**Intergenerational
Program**
(Senior Day and
Childcare)





June 2015



Designed to welcome family, children and friends with areas to create family memories and have special celebration meals; and **dancing** to piano music.



2008

St. Paul's
PACE Reasner
Opens first PACE
program in San Diego



2012

St. Paul's **PACE**
Akaloa,
Chula Vista
(first in San Diego
South County)



2017/2018

St. Paul's **PACE**
East County



Dedicated to Quality of Life



SUPPORTIVE SERVICES PROVIDED BY ST. PAUL'S PACE

- Transportation
- Social support
- Primary Doctors
- Medical Specialists: Dentists, Podiatrist, Behavioral Health, Optometrist, Cardiology
- Nursing care
- Medications and med management
- Physical and Occupational therapy
- Home care: cleaning, laundry, shopping
- Day center care, recreational program and meals
- Dietary counseling and support

*Services are provided as needed , and
approved by the Interdisciplinary team.*



SUPPORTIVE HOUSING OUTCOMES

- **Improved:**

- Physical /Mental Health
 - Activities of Daily Living
 - Community Integration
 - Cognition
 - Activity Engagement

- **Reduced:**

- Unnecessary hospital/ER visits
 - Police/ambulance intervention
 - Service needs
 - Depression

Parker-Kier

Bankers Hill, San Diego

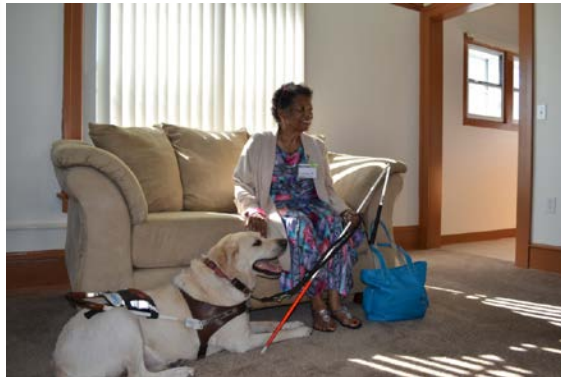
St. Paul's PACE partnered with the San Diego Housing Commission and Housing Development Partners to provide **11 apartments** for very low-income seniors and seniors at risk of homelessness.



St. Paul's
SENIOR SERVICES



*Seeing apartment
for the first time!*



Views of San Diego Bay!

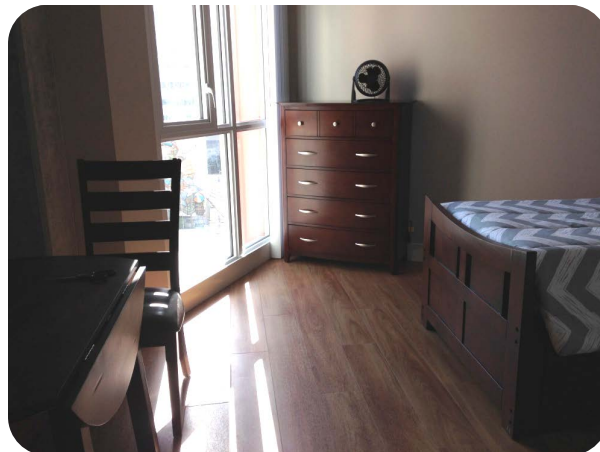


Opened 2013

St. Paul's PACE at Celadon

Downtown San Diego

St. Paul's PACE partnered with Bridge Housing to provide **63 apartments** for homeless seniors, or “at risk” of homelessness.



Talmadge Gateway



St. Paul's PACE partnered with Wakeland Housing & Development Corporation to provide **59 apartments** for homeless seniors.

Talmadge Gateway, a “new” building in which all 59 apartments are dedicated to St. Paul's PACE, and is the **first permanent supportive housing development in San Diego dedicated solely to medically frail, formerly homeless seniors.**



Talmadge Gateway

The first resident getting his keys!!



June 2017

**“THERE IS NO HEALTH
WITHOUT HOUSING”**

