



Assembly Aging and Long-Term Care Committee

From Crisis comes Opportunity

Joshua Bamberger, MD, MPH
joshdbamberger@gmail.com



- Notes of the Problem
- 80% of residents, a 40% cost increase
 - 20% of the 1000 residents cost
 - 100%
 - 20% of residents are in the hospital
 - No backup for "long-term care"


Proof



Solutions



Thank You!
joshdbamberger@gmail.com



Assembly Aging and Long-Term Care Committee

From Crisis comes Opportunity

Joshua Bamberger, MD, MPH

and Long-Term Care Committee

From Crisis comes Opportunity

Joshua Bamberger, MD, MPH
joshdbamberger@gmail.com



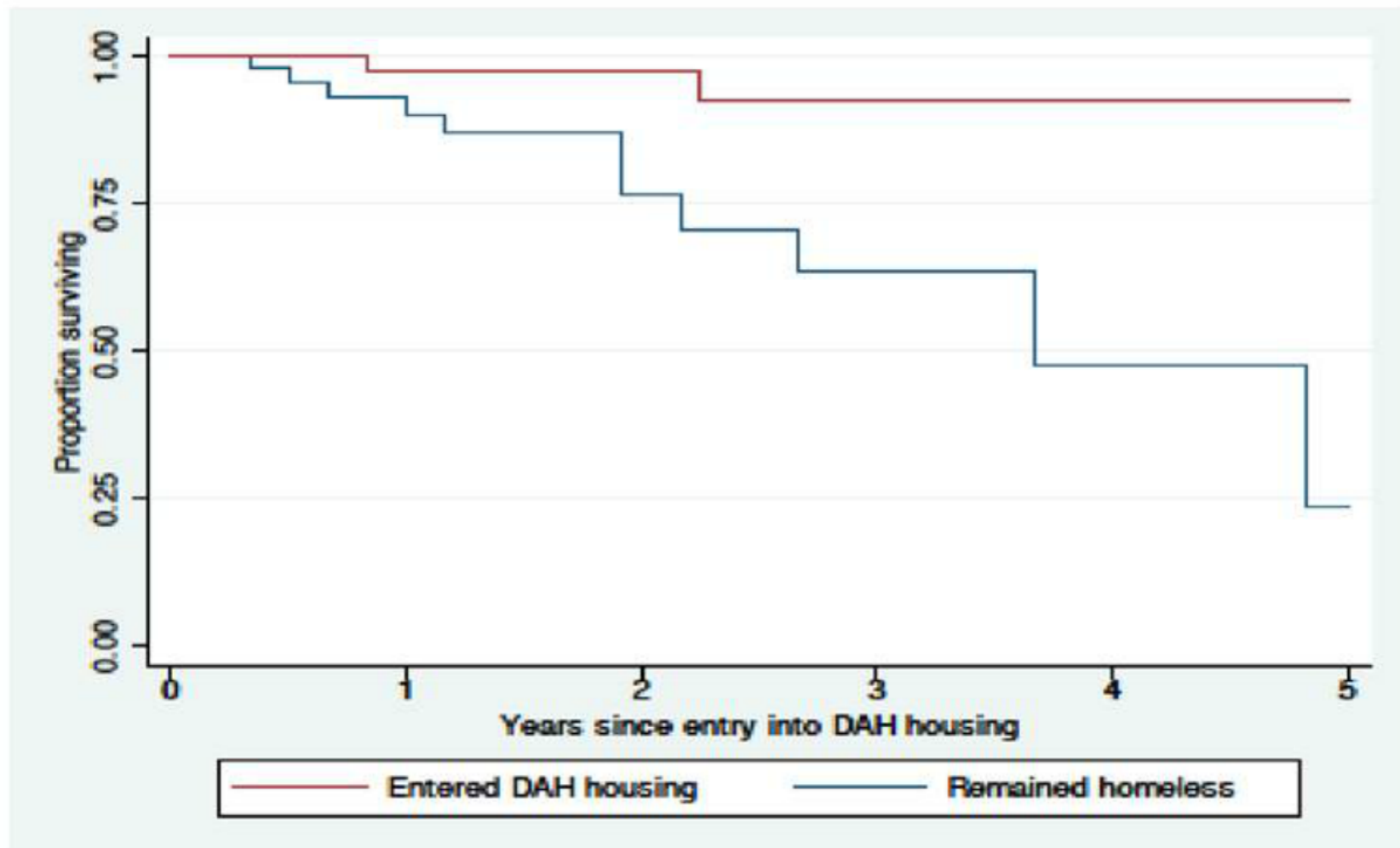


Nature of the Problem

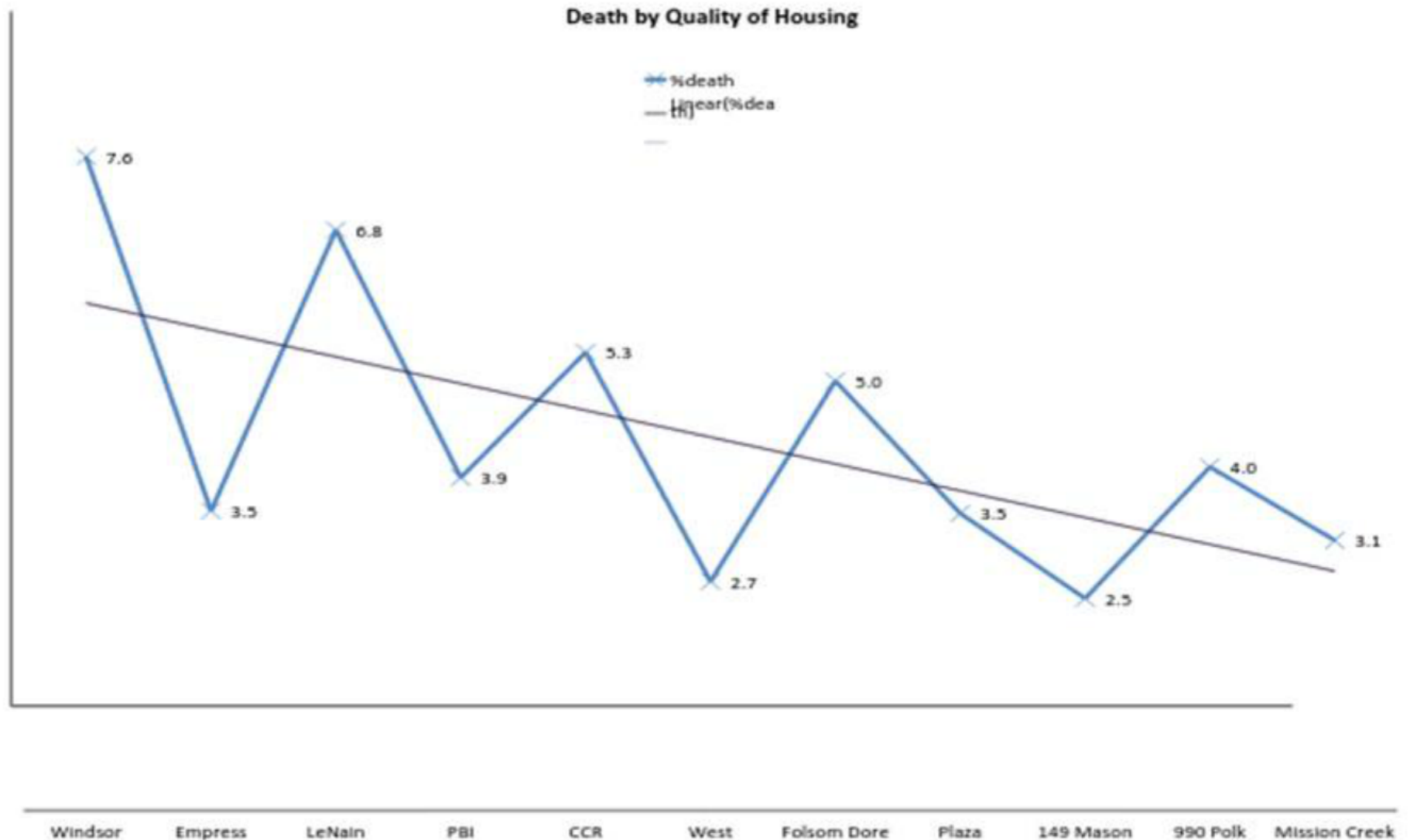
- 90% of homeless adults exit homelessness
- 5% of hls = 70% healthcare cost
- Aging
- 50% of hls seniors are first time homeless
- No Medicaid for "room and board"

Medical success: housing homeless

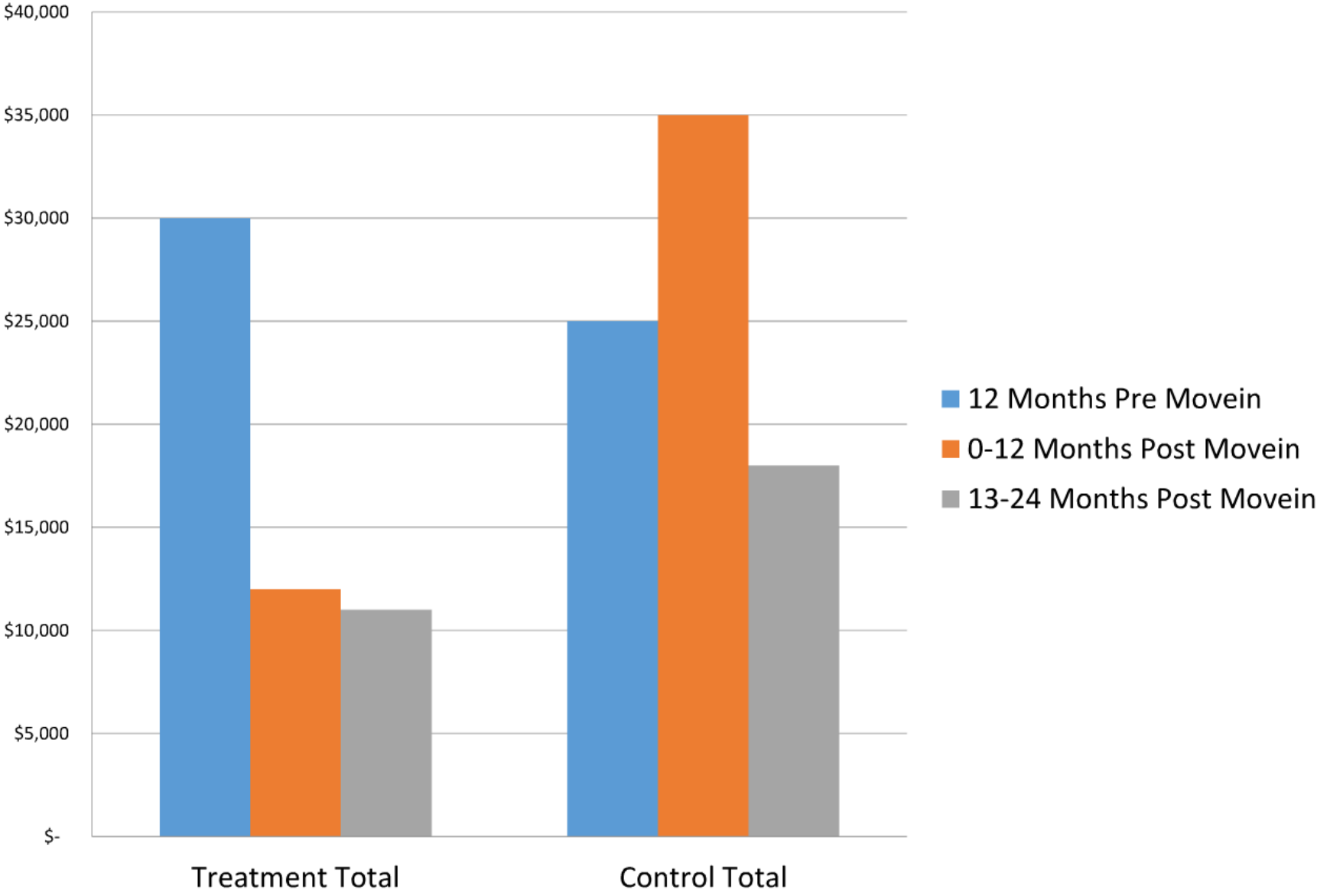
Housing homeless with AIDS increased survival rates by about 80%



Relationship between Housing Quality and Mortality



Cost Before, 1 and 2 Years after housing



Solutions




Innovative Models In Health And Housing

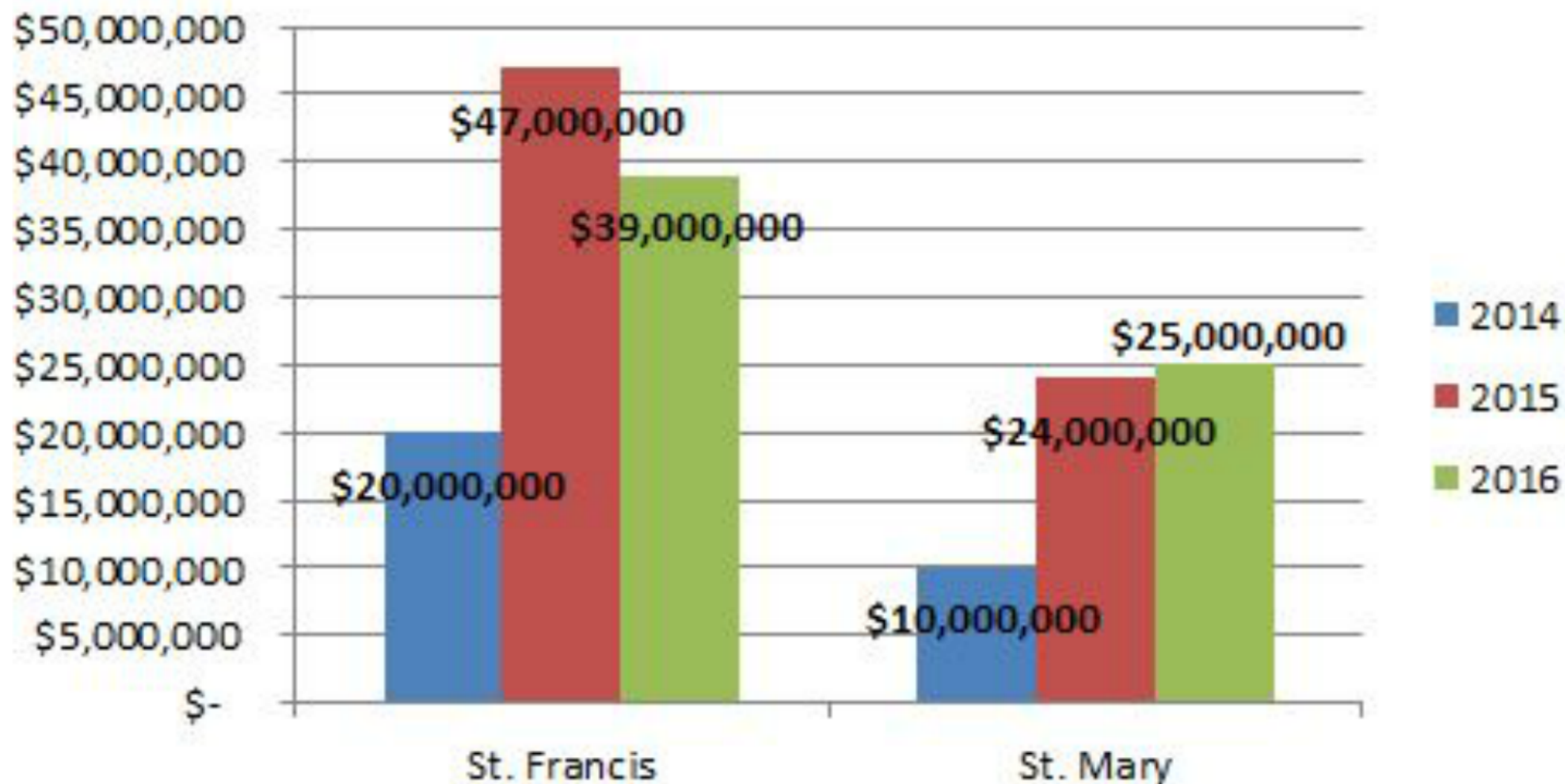




Hospital Community Benefit Obligation

- Portland- \$21.5M for 345 units
- Required for non-profit status 
- Increased revenue after ACA
- Housing = Community Benefit
- Befriend your hospital admin

Medi-Cal Revenue



Alternative to Skilled Nursing facilities- Health Plan of San Mateo

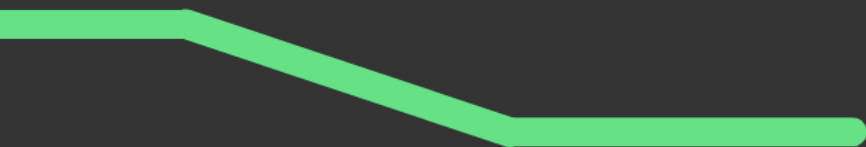
- Single-payor for low income adults
- Flexible matched funds for housing costs
- Advocate to expand ALW



Conclusions and Opportunities

Home Based Waivers

- Expand ALW
- ALW vs. Cal Medi-Connect
- Learn from DD sector



Thank You!

joshdbamberger@gmail.com

